

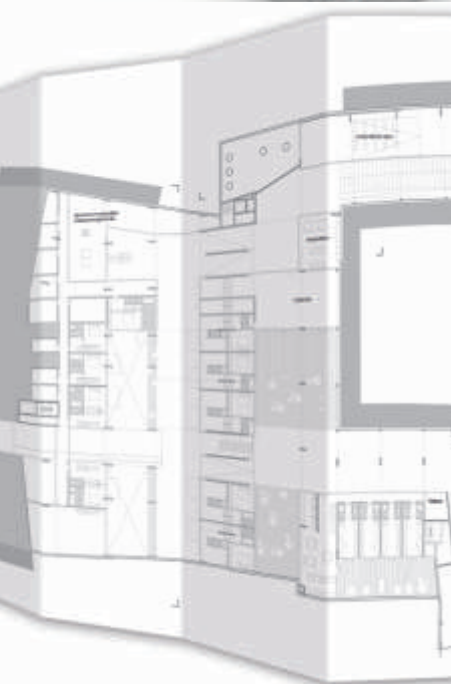
Big performance, small footprint

RICOH

Aficio™ | **MP W2401**
MP W3601



incredible
productivity



big
performance
small
footprint



easy
to
operate

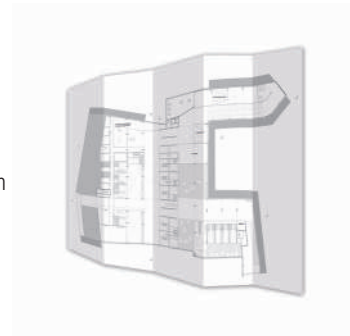


An all-in-one solution for professional administrators

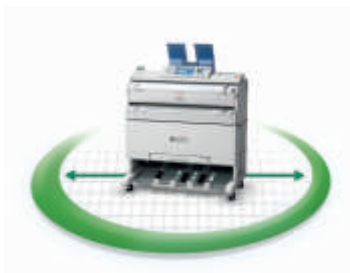
Big performance, small footprint

The MP W2401/MP W3601 provide the dream combination: affordable wide-format document production in a compact footprint. You can securely copy, scan, distribute and archive with one surprisingly compact unit. With their top-of-the-range optional colour scanner and speed of 6.4 A1 pages per minute (MP W3601), these devices offer productivity improvements for the busy office. You can process a variety of paper sizes from A4 up to A0: opt for the two roll configuration or the additional 250-sheet paper cassette (up to A3).

- Extremely compact design
- Optional colour scanner with variety of standard features
- Very easy to use – large LCD touch-panel
- Latest security features fully incorporated
- Superb productivity: 4.4/6.4 ppm (A1) and 2.4/3.4 ppm (A0)



Enhance your wide-format workflow



Single space-saving footprint

For such heavyweight performers, the Aficio™ MP W2401/MP W3601 take up surprisingly little space with their single footprint. No wonder, they are the most compact devices in their class. You certainly won't need a separate print room, which saves valuable office space.

Scan, distribute, share

The optional built-in colour scanner is guaranteed to increase your productivity. You can revise large-format drawings in colour: add comments, scan the drawings and distribute. Scan to email, folder or URL is also possible. The MP W2401/MP W3601 even allow you to preview scanned documents before transmission. Scan your original documents at a high resolution of 600 dpi and save them on a USB memory device or SD memory card.

Easy to operate

If you use other Ricoh devices, you will immediately feel at home. The 8.5-inch LCD colour touch-panel allows you to access all the device's great functions. Its status is clearly visible and a login/logout hard key enables rapid user authentication. Documents can be previewed in full-colour thumbnails. A simplified display with fewer keys and a larger font allows visually impaired users to operate the devices confidently. And to make the devices even more user-friendly, they support 18 languages.





Highly secure

Both devices incorporate the latest level of security features to meet customer requirements in this area. They support security standards IEEE 802.11 WEP and WPA/WPA2 (IEEE 802.11i). WPA/WPA2 is an interoperable Wi-Fi security specification introduced by Wi-Fi Alliance. It provides a high level of assurance to enterprises and small businesses. Your data remains fully protected; only authorised users are able to access your networks.

Maximum uptime

With the aid of clear, step-by-step animated guidance, the touch-panel guides you smoothly through toner replacement procedures or any irregularities such as a paper jam. The paper jam clearance mechanism itself is refreshingly simple. Side guides enable easy lower tray stacking.



Environmentally friendly

At Ricoh, we help you lower the environmental impact in your office as well as your cost. The Aficio™MP W2401/MP W3601 have eco-friendly and money-saving features such as a short warm-up time (less than 120 seconds), increased toner yield and low power consumption. They also comply with the RoHS directive. In addition, Ricoh products are Energy Star compliant. This means less CO₂ is produced in providing the energy needed to run Ricoh devices.

COPIER

Copying process:	Electro photographic printing
Copy speed:	MP W2401: 2.4/4.4 copies per minute (A0-A1) MP W3601: 3.4/6.4 copies per minute (A0-A1)
Resolution:	Maximum: 600 dpi
Multiple copy:	Up to 99 (ten key input)
Warm-up time:	Less than 2 minutes
First output speed:	Less than 21 seconds (A1)
Reduction/Enlargement:	4R/4E
Zoom:	25 - 400% (in 0.1% steps)
Memory:	1,024 MB + 160 GB Hard Disk Drive
Paper input capacity:	1-sheet bypass tray 1 Roll Feeder up to 914 mm (option) 2 Roll Feeders up to 914 mm (option) 250-sheet paper cassette (option)
Paper output capacity:	Top: 50 sheets A1 (plain paper) Bottom: 40 sheets A0 (plain paper)
Paper size:	Minimum: 210 x 297 mm Maximum: 914 x 15,000 mm
Paper weight:	21 - 157 g/m ²
Dimensions (W x D x H):	1,080 x 637 x 580 mm
Weight:	Less than 107 kg
Power source:	220 - 240 V, 50/60 Hz
Power consumption:	Less than 1,440 W

PRINTER (option)

Controller type:	Embedded
Print speed:	MP W2401: 2.4/4.4 prints per minute (A0/A1) MP W3601: 3.4/6.4 prints per minute (A0/A1)
Printer resolution:	Maximum: 600 dpi
Print size:	Minimum: 210 x 297 mm Maximum: 914 x 15,000 mm
Network protocol:	TCP/IP, IPX/SPX, Apple Talk

Supported file formats:	HPGL, HPGL2 (HPRTL), TIFF (CAL), Adobe® PostScript® 3™, RPCS™
Supported environments:	Windows® 2000/XP/Vista/Server 2003 Macintosh 8.6 or later (OS X Classic) Macintosh v10.1 or later (native mode)
Interface:	Standard: Ethernet 10 base-T/100 base-TX, USB 2.0 Option: Wireless LAN (IEEE 802.11b), Gigabit Ethernet, USB Host I/F
Recommended PC:	Please contact your supplier for the best recommended list

SCANNER (option)

Scan speed:	Mono: 80 mm/sec (600 dpi) Colour: 26.7 mm/sec (600 dpi)
Resolution:	600 dpi (TWAIN: 150 - 1,200 dpi)
Original size:	Maximum 914 x 15,000 mm
Output formats:	Mono: TIFF, MH, MR/MMR Colour: Grayscale/Full Colour: JPG, PDF
Bundled drivers:	Network TWAIN
Scan destination:	Scan to email SMTP, POP3 Scan to Folder, SMB, FTP, NCP

OTHER OPTIONS

1 Roll Feeder/2 Roll Feeders (up to 914 mm), 250-sheet paper cassette (up to A3), Table, Originals hanger, Roll holder, Rear stacker, File Format Converter, Browser Unit, USB2.0/SD slot, Wireless LAN

For availability of models, options and software, please consult your local Ricoh supplier.



ISO 9001:2000 certified
ISO 14001 certified

Ricoh has designed these products to meet EC ENERGY STAR guidelines for energy efficiency.

All brand and/or product names are trademarks of their respective owners.

Specifications and external appearance are subject to change without notice. The colour of the actual product may vary from the colour shown in the brochure.

RICOH

URL: <http://www.ricoh.co.in>

RICOH INDIA LIMITED

CONTACT: Tel: 011-41613010-18 Fax: 011-41613019 Email: ril.info@ricoh.co.in SMS: 'RICOH' to 53456

REGISTERED OFFICE: 1201, 1st Floor, Building No. 12, Solitaire Corporate Park
Andheri-Ghatkopar Link Road, Andheri-East, Mumbai - 400 093

Tel: (022) 22881953/ 54/ 55 Fax: (022) 22881950

Ahmedabad, Bangalore, Bhopal, Bhubaneswar, Chandigarh, Chennai, Coimbatore, Delhi, Guwahati, Hyderabad, Jaipur, Kochi, Kolkata, Lucknow, Mumbai, Nagpur, Patna, Pune, Ranchi, Visakhapatnam.

For more information, please contact: